



KERRY CRAFT TRAILS 2013



Showcasing Original Design
and Craft Making from
County Kerry, Ireland.



www.originalkerry.com



Original Kerry is a network of craft makers who are based in County Kerry. The locations of makers' workshop studios and retail outlets are dotted right across the County of Kerry. Many members from the Original Kerry network are represented on Kerry Craft Trails. Our aim is to support contemporary and traditional designer makers from our County. Craft makers are a vital aspect of Kerry's unique cultural mix ... visit all or just a few but do let yourself enjoy one of Kerry's most authentic cultural experiences!

CRAFT SHOWCASES AT YOUR EVENT OR PREMISES

Available for festivals and special events, Original Kerry and its members can provide you with a retail concession store or craft showcase for your event. We can create for you a retail space that will offer your audience, delegates, guests or visitors a range of craft work to enhance and compliment your event. We can provide all display units and staffing. Members of Original Kerry can also provide craft making demonstrations on site such as woodturning, candle-making, pottery throwing, lace-making and book binding. We provide a full choice of traditional and contemporary design and craft making demonstrations that we can bring to your location. We aim to keep our fees as small as possible for this service. Please contact us directly to discuss requirements.



KERRY craft trails

Kerry Craft Trails is an initiative of Original Kerry that gives access to the public to view and participate in the making of fine craft. We highlight the process of craft making through demonstrations and workshops with the makers, who open their doors to visitors exploring Kerry Craft Trails. Kerry Craft Trails is ideally suited to small groups (max. 20) and fully independent travellers.

Look for the **Kerry Craft Trails sign** on approved craft makers' premises.

Many makers have a studio, shop, toilets and café facilities on-site. Do try to plan ahead to make the most of your visit. Contact makers in advance to arrange private sessions.

Makers' fees and charges are at their own discretion. It is free to visit but there is generally a charge for workshops and demonstrations. Opening times can vary, ideally contact makers in advance. Check out the Kerry Craft Trails video online at www.originalkerry.com



THE WORK OF ORIGINAL KERRY

Original Kerry is a consumer brand initiative of Kerry Food & Craft Forum Ltd. Original Kerry promotes awareness about the quality and timelessness of hand crafted products and the benefit of supporting Kerry based craft makers. The project has a long term value in its support of craft makers so that we build a strong future for craft and design in Kerry. In 2013 we will look nationwide and internationally to realise the long term connection of the Original Kerry brand to Kerry's diaspora.

The work of Original Kerry is divided into three strategic areas:

- **Promotion of the Original Kerry brand:** Online and offline, print and broadcast
- **Development work for Kerry's craft sector:** Information, networking, training, exposure to best practice for market readiness. Retailer, distributor and trade show activity
- **Opportunities for the public to engage with the project:** Kerry Craft Trails, special events, pop-up shops, demonstrations, craft showcases, workshops and tours.



1 KENMARE LACE AND DESIGN CENTRE

The Square, Kenmare Town

Whether you are a lace enthusiast or just looking for a unique locally made gift you won't be disappointed. Lace, books and lacemaking materials can be bought at The Kenmare Lace and Design Centre. As well as a display of beautiful antique lace from the convent of the Poor Clares Kenmare, you can see fascinating demonstrations of Kenmare and other Irish laces. Check out the Kenmare Lace Festival 3rd to 6th October this year.



Contact: **Nora Finnegan**
T: 064 6642978 / 087 2346998
E: info@kenmarelace.ie
W: www.kenmarelace.ie

Lat: 51.880712; Lon: -9.584364

CHARLOTTE VERBEEK ART & JEWELLERY

Dawros Studio Gallery Dawros Kenmare, Beara Peninsula or at Kenmare Art Space, Henry Court Kenmare Town

Just 7km from Kenmare and just off the Beara Way, Charlotte Verbeek's studio and gallery is well worth a visit. Distinctive collectable jewellery using colourful antique beads and silver. Original glass beads hand crafted in Charlotte's Dawros Gallery. Beautiful space in a magnificent setting.



Contact: **Charlotte Verbeek**
T: 087 6875461
E: charlotteverbeek@me.com
W: www.charlotteverbeek.com

Lat: 51.5042; Lon: -9.3707

2 PFK KENMARE

Henry Street, Kenmare

Master Goldsmith and jewellery designer Paul F Kelly produces handcrafted originals at his workshop and retail outlet. Working in gold and silver, and open for commissioned pieces, Paul often combines gold and silver with precious or semi-precious stones to create one of the most distinctive and inspiring jewellery collections in Ireland. His exclusive Ring of Kerry displays two individual silver & 18 carat gold bands, one set with an emerald, the other a cut diamond. Connected the ring sparks colours of green, white and gold.



Contact: **Paul Kelly**
T: 064 6642590
E: info@pfk.ie
W: www.pfk.ie

Lat: 51.878994; Lon: -9.583640

BLACKWATER WOODTURNERS

The Old Schoolhouse, Blackwater Bridge, Kenmare

Located on the N70 Ring of Kerry road between Kenmare and Sneem. Woodturners and makers of Uilleann Pipes, Ireland's most traditional musical instrument. For a really special experience visit the workshop and see how the pipes are made and hear them played. In their Woodturning Gallery you will see their range of beautiful handcrafted woodturned pieces. Fabulous demonstration, warm welcome.



Contact: **Lorcan or Anne Dunne**
T: 087 8399472
E: blackwaterwoodturners@gmail.com
W: www.blackwaterwoodturners.com

Lat: 51.5108; Lon: -9.4449

5 CARA TURNER CERAMICS

Castlecove, Near Caherdaniel, Ring of Kerry

Humorous and whimsical ceramic sculpture. Custom-made for all occasions and 'stock' items are for sale at Cara's workshop near Caherdaniel. A lovely stop on the Ring of Kerry. View work in progress in the studio and meet Cara herself. Cars only - no bus access.



Contact: **Cara Turner**
T: 087 6765846
E: caraturner@eircom.net
W: www.caraturnerceramics.com

Lon: 51.771; Lat: -10.068

EDGE OF THE EARTH CERAMICS

Cealla Cnoc, Sussa

Handmade decorative and functional ceramics for the garden and home. Crafted using stoneware clay and brightly coloured glazes and slips. Come along and make ceramics with Julia Clarke who heads up the business. Visitors welcome.



Contact: **Julia Clarke**
T: 087 9593162
E: eoteceramics@mail.com
Find on Facebook

Lat: 51.877127; Lon: -10.274792

6 SEA SHELL POTTERY

The Glen, Faha, St. Finian's Bay

Fabulous introduction to the Raku process of firing ceramics. Anja Gnauck creates individual and commissioned once off ceramic animal sculptures. The function of the Raku process of making lies in its sheer beauty.



Contact: **Anja Gnauck**
T: 087 9462549
E: anja.gnauck@gmx.de
W: www.anjagnauck.info

Lon: 51.8451109; Lat: -10.350494

HANDTHROWN STONWARE POTTERY

New Street, Cahersiveen Town

This two tone range of pottery created by Gunter Treffkorn in this studio setting, is a simple reflection of Kerry's wonderful landscape.

The all-blue range represents Gunter's expression of our spiritual nature as an island people. Potter's wheel onsite where oftentimes you can see Gunter at work. Well worth a visit and Gunter is a great conversationalist about art in Ireland today!



Contact: **Gunter Treffkorn**
T: 066 9472444
E: gunterpottery@eircom.net

Lat: 51.9477635; Lon: -10.224143



9 BLUEBELL ECO CANDLES

Kilquane, Headford, Killarney

Makers of Ireland's first natural aromatherapy candles. Their Soy Aromatherapy Candles are clean burning, long lasting, hand poured & drenched in natural essential oils. Let their aromatherapy candles soothe your senses through beautifully crafted, all-natural products. Full range of their natural collection available in their vintage styled studio. Watch their beautiful teacup candles, sherry trifle candles & cupcake candles being made on site. Come and make your very own designer candle with workshops & demos available by appointment. Inspired by Nature. Made by hand.

Contact: **Fleur or Jimmy Daly**
 T: 086 8112398
 E: bluebellecocandles@gmail.com
 W: www.bluebellecocandles.com

Lat: 52.315; Lon: -9.1925



MUCROS POTTERY 10

Muckross House, Killarney

Mucros Pottery known for its distinctive honey/blue range of hand thrown stoneware pottery, now also produces a new exciting contemporary gift ware range 'Sandstorm'. Mucros pottery is a truly Irish handmade product with prices ranging from €5 - €150.

You can take part in throwing a pot through pre-booking is essential. Small groups catered for.

Contact: **Margaret Phelan**
 T: 064 6670153
 E: pottery@muckross-house.ie
 W: www.muckross-house.ie

Lat: 52.01778; Lon: -9.501667



MUCROS WEAVING 11

Muckross House, Killarney

Wraps, hats, capes and gloves always in stock but you can also see the making of Mucros hand woven scarves which never go out of fashion. On the grounds of Muckross House and a good stop when visiting Killarney.

Contact: **John Cahill**
 T: 064 6634526
 E: weaving@muckross-house.ie
 W: www.muckross-house.ie

Lat: 52.017778; Lon: -9.501667



Craft makers are a fascinating aspect of Kerry's unique cultural mix



12 MUCROS BINDERY

Muckross House, Killarney

A conservation service for rare books, paper conservation and book-binding, repair, advice and disaster planning. Bookbinding available as well as their very unique range of notebooks and journals which retail under the Mucros brand name. Watch them online in interview with Micheál O'Muircheartaigh on www.originalkerry.com.



Contact: **Paul Curtis**
T: 064 6670151
E: bindery@muckross-house.ie
W: www.muckross-house.ie

Lat: 52.017778; Lon: -9.501667



KILLARNEY FRAME SHOP 14

Innisfallen Mall, Killarney

Killarney Frame Shop represents a range of makers and artists from across the County including Earl Allgrove, Anja Gnauk, Pauline Bewick and many others. JJ Cleary who owns the shop can often be seen on site working on Irish Heraldic Crests and Family Scrolls. JJ has had an interest in researching the heraldic histories of Irish Surnames for the past 15 years. Meticulously researched, the scrolls are printed on fine art parchment and canvas and are presented in locally made frames which can be mailed abroad.

Contact: **JJ Cleary**
T: 087 2272236
E: jjclearyscrolls@gmail.com
W: www.jfc.ie

Lat: 52.397295; Lon: -9.777539



13 THE BLUE POOL GALLERY

Muckross, Killarney

Ceramic artist Mary Neeson creates porcelain objects that include angelic forms, porcelain pillows, intimate lighting options and lustrous wall pieces. Groups can paint ceramic mugs on site which Mary will glaze and post. Bookings for groups essential. Great instructive fun - all ages will enjoy in a gorgeous gallery retail setting.



Contact: **Mary Neeson**
T: 064 6629049
E: mneesonceramics@yahoo.ie
W: www.maryneesonceramics.com

Lat: 52.017778; Lon: -9.501667



KILLARNEY CRAFTERS 15

Chapel Lane, off New Street, Killarney

Step inside the world of artisans, crafters and designers, and experience the creative process behind their products. Handmade ceramics, quilting, hand knits, fused glass jewellery & much more. A collective of over 40 small-scale local craftspeople dedicated to the mastery of their craft. Meet the Makers - through daily workshops and demos. Come in and make your own candles, pottery or simply stock up on supplies.

Contact: **Helen or Mary**
T: 089 4223265
E: info@killarneycrafters.com
W: www.killarneycrafters.com

Lat: 52.059240; Lon: -9.51143





16

KERRY CRAFTED GLASS

Knockataggle-More, Kilcummin, Killarney

A glass blowing demonstration second to none, join Terence and his wife Helen for an insight into design and technique. Kerry Crafted Glass hand make mouth blown pieces of decorative glass using 100% recycled glass.



Contact: **Terence McSweeney**
T: 086 0824870
E: kerrycraftedglass@eircom.net
W: www.irishkerryglass.com

Lat: 52.1079812; Lon: -9.4520187



17

KERRY WOOLLEN MILLS

Listry, Killarney

A fascinating experience to see first-hand the carding, spinning, weaving and finishing of scarves, shawls, tweeds, blankets and rugs. Seeing the production process of knitting yarns in pure new wool and other natural fibres drives home a huge appreciation of the fabric and craftsmanship of these fashion items.



Contact: **Andrew & Yvonne Eadie**
T: 064 6644122
E: sales@kerrywoollenmills.ie
W: www.kerrywoollenmills.ie

Lat: 52.111168; Lon: -9.663786



Participate in the making of fine craft through demonstrations and workshops with the makers, who open their doors to visitors exploring Kerry Craft Trails.



craft trails

CORCA DHUIBHNE WEST KERRY



- Kerry Craft Trails Makers
- Independent Makers



1 GOOSE ISLAND WORKSHOP

Inchaloughra, Castlegregory

Makers of Windsor chairs and stools to order, as well as bespoke furniture to commission. Made from Irish green wood selected for its sustainability. Garry Marcham's technique and finish is second to none. His love of the environment and the development of our forestry culture runs deep. A local indigenous industry on the up. Commissions taken, collectors will love. Demonstrations thoroughly informative. The workshop offers courses in chair making from beginners to advanced.



Contact: **Garry Marcham**
T: 066 7139896
E: gooseislandworkshop@gmail.com
W: www.gooseislandworkshop.ie

Lat: 52.255496; Lon: -10.017342

SINÉAD LOUGH CERAMICS 3

Baile Na nGall

Take the Ballyferrier Road out of Dingle and turn left after 3 miles. Sinéad Lough makes handthrown contemporary pottery, mainly tableware for everyday use, in a range of bright colours. Beautiful work, beautiful place, well worth a visit where you can meet Sinéad on site during the summer months.



Contact: **Sinead Lough**
T: 087 2155703
E: sineadlough@hotmail.com
W: www.sineadloughceramics.com

Lat: 52.1012; Lon: -10.2030

2 SANDHOPPER ART

The Maharees, Castlegregory

As an expert in etching and stone carving John O'Connor designs each piece by hand to his customers' specifications and uses a range of local stone and slate to bring name plates, stoneware gifts, boulders, signs and engravings to life. One to commission for top class quality stonework.



Contact: **John O'Connor**
T: 087 616528
E: sandhopperart@gmail.com
W: www.sandhopperart.com

Lat: 52.255731; Lon: -10.017206

URSULA TRAMSKI 4

Ballineanig, Ballyferrier

Ursula specialises in the ancient art of Japanese wood firing using Ireland's only traditional anagama kiln. When Ursula lights the kiln neighbours and enthusiasts gather to help with the firing over a number of days - all done by hand. Earth, water, fire and wood achieve the distinctive colour. Much prized by potters and collectors alike.



Contact: **Ursula Tramski**
T: 087 7735942
E: ursel.tramski@web.de
W: www.smashingpots.com

Lat: 52.162613; Lon: -10.392637

5 PAT LAWLESS FURNITURE

Ballyferriert West, Dingle

Furniture production, mirrors, lamps and much more all in various wood types. Call to his Studio 1km West of Ballyferriert to see his quality hand-made furniture where you can make a willow pencil, Bridget Cross, stool or more. Also see his workshops at Greencrafts events.



Contact: **Pat Lawless**
T: 087 7426360
E: info@lawlessfurniture.com
W: www.lawlessfurniture.com

Lat: 52.161928; Lon: -10.424308

7 THE OLD BARN GALLERY

Gortadubha, Sleah Head Drive, Ballyferriert

This welcoming little gallery is filled with a wonderful display of colourful handpainted glass, each unique piece is painted by Martine herself who will take visitors through the stages of creating your own individual piece as a memento of your trip to Dingle. Take the road to the Dingle Golf Club (Ceann Sibéall) off the Sleah Head Drive. Follow the Old Barn Gallery signs.



Contact: **Martine Moriarty**
T: 066 9156508 / 086 8365972
E: theoldbarngallery@yahoo.co.uk
W: www.martinemoriarty.com

Lat: 52.176510; Lon: -10.424652

6 FAOILEÁN POTTERY

Ballyferriert West, Co. Kerry

Theresa Storey of The Green Apron, an Irish Artisan Preserve company describes Beiti as the designer behind the perfect tea pot which took Theresa some 20 years to find. Apart from her fine tea pots check out Beiti's beautiful new range of hand thrown pieces along with up to 50% off some older stock. Beiti offers Paint Your Own Pottery sessions also at Faoileán Pottery which are great fun for all ages decorating your own earthen ware to bring home as a gift or memento. Kids will love.



Contact: **Beiti Uí Riain**
T: 086 1579392
E: faoileanpottery@gmail.com
W: www.originalkerry.com/faoileanpottery

Lat: 59.941; Lon: -10.2530

8 ALL ABOUT OGHAM

Baile Bhoithin, Ballyferriert

Ken Bolger is a craft maker, who works mostly with reclaimed slate and copper. A lot of his work is based on celtic mythology and the ancient ogham script. He has taken this beautiful language and developed gifts that are not only traditional but are also very unique. Ken believes that this ancient code must be kept alive for future generations. Do make contact to view.



Contact: **Ken Bolger**
T: 087 9645561
E: kenbolgerart@eircom.net
W: www.allaboutoghams.com

Lat: 52.161718; Lon: -10.395126

9 LOUIS MULCAHY POTTERY

Clochar, Baile 'n Fheirtéaraigh

The ideal stop on the Sleá Head Route, this Pottery, Workshop and Café, stocks an extensive range of ceramic giftware and tableware, all made on-site, from tiny pots to huge urns, in striking glazes reflecting the rich colours of the peninsula. In the Open Room Experience you can try your hand at making a pot under the eye of an experienced potter, or enjoy delicious home baking and local food in the café - Recommended by Georgina Campbell.



Contact: **Linda Hannafin**
T: 066 9156229
E: linda@louismulcahy.com
W: www.louismulcahy.com

Lat: 52.156510; Lon: -10.451543

HOLDEN LEATHER GOODS 11

Burnham, Dingle

Designer makers of fine leather goods, the Holdens have developed a beautiful showroom and workshop just 3 miles outside Dingle Town on the Sleá Head drive. Conor Holden's designs will stand the test of time and his 'Siobhán bag' is a design classic. An excellent insight into the art of working with leather.



Contact: **Conor Holden**
T: 066 9151796
E: info@holdenleathergoods.com
W: www.holdenleathergoods.com

Lat: 52.119594; Lon: -10.308605



10 ANNASCAUL POTTERY

Main Street, Annascaul

Annascaul Irish Pottery is hand thrown and each piece is individually glazed & decorated using unique colours and designs. One to collect, its design will stand the test of time ensuring it is always on trend. Great demonstration and pot throwing experience to take part in. One to book. Excellent instruction.



Contact: **Zac Phelan**
T: 066 9157848
E: zac@annascaulpottery.com
W: www.annascaulpottery.com

Lat: 52.152077; Lon: -10.053496

12 NU GOLDSMITH

Green Street, Dingle

The immaculate form and style of Niamh Utsch's vibrant jewellery is admired both in Ireland and overseas. She has been creating her own designs under the NU label at her workshop and gallery in Dingle, Co. Kerry since 1996. The perfect beauty and individuality of her jewellery have won Niamh a loyal and devoted clientele who appreciate that, of every one of Niamh's pieces, there is only one in the world.



Contact: **Niamh Utsch**
T: 087 2413554
E: nugoldsmith@gmail.com
W: www.nugoldsmith.com

Lat: 52.1418; Lon: -10.2697



13 KATIE AND ME CANDLEMAKERS

Green Street Townhouse,
1 Upper Green Street, Dingle

The source of inspiration behind each candle is the beautiful landscape and wild flowers of the Irish countryside. Each candle is hand made using 100% natural wax. Gorgeously packaged they make the perfect travel companion and gift. Paula also makes unique clocks out of vintage china.



Contact: **Paula Murchan**
T: 086 3798308
E: pmurchan@gmail.com
Find on Facebook

Lat: 52.1409; Lon: -10.2711



Contact: **Seán Daly**
T: 087 4128803
E: sean@dinglecrystal.ie
W: www.dinglecrystal.ie

Lat: 52.141054; Lon: -10.27106

DINGLE CRYSTAL 15

Green Street, Dingle

Seán Daly cuts crystal in his workshop outside Dingle on the Sleá Head Drive and retails from his café store on Green Street in Dingle Town. Excellent cut glass demonstration and well worth making a visit to view. Seán's work is exported widely and is much sought after in the United States. Watch him online in the Kerry Craft Trails video at www.originalkerry.com.



14 BRIAN DE STAIC JEWELLER

The Wood, Dingle (just outside Dingle Town on the left before the Milltown roundabout)

Brian De Staic is a prestigious Irish Jewellery Company which is exclusively dedicated in creating jewellery with style. Taking inspiration from landscape in which he lives and works Brian crafts a wide range of jewellery according to the age-old traditional of the Celt. Workshop in full view from shop and lovely coffee on offer to help you enjoy your visit.



Contact: **Brian De Staic**
T: 066 9151298
E: info@briandestaic.com
W: www.briandestaic.com

Lat: 52.1412; Lon: -10.2710



KATHLEEN MCAULIFFE 16

Green Street, Dingle

Award winning Irish accessories designer, Kathleen McAuliffe specialises in millinery and her range covers jewellery, bags and scarves. A beautiful shop to visit and always a chance that you will meet Kathleen herself. Commissions for special occasions welcome.



Contact: **Kathleen McAuliffe**
T: 066 9150644
E: kathleen@kathleenmcauliffe.com
W: www.kathleenmcauliffe.com

Lat: 52.141054; Lon: -10.27106

17 AN GAILEARAÍ BEAG

Main Street, Dingle

An Gailearaí Beag is a showcase for the West Kerry Craft Guild, a non-profit organisation founded in 1999 bringing together crafts people and artists living on the Dingle Peninsula. Whether you are looking for a gift or something special for your home, An Gailearaí Beag provides inspiring shopping ideas when it comes to local art and craft work.



Contact: **Linda Ni hAinfein**
T: 066 9152976
E: info@angailearaibeag.com
W: www.angailearaibeag.com

Lat: 52.141733; Lon: -10.268416



19 LISBETH MULCAHY WEAVINGS

Green Street, Dingle

Siopa na bhFiodóirí is the studio/shop of Lisbeth Mulcahy, one of Ireland's best known designer/weavers and tapestry artists. The shop also stocks a range of other Irish designers and is open Mon- Sat through the year and Mon-Sun (May-Oct).

To see weavers at work please ring ahead to confirm weavers' working hours.
No booking required.



Contact: **Linda or Trish**
T: 066 9151688
E: siopa@lisbethmulcahy.com
W: www.lisbethmulcahy.com

Lat: 52.053363; Lon: -9.327618



18 STITCH IN TIME

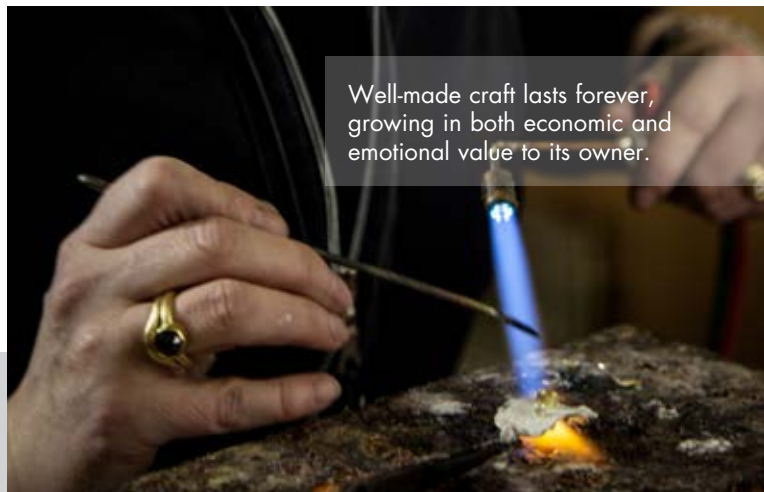
Main Street, Dingle

Bang on trend and with a keen eye for colour Mary Fitzgerald uses PVC Oil Cloth to hand make her stylish Malaí Dingle bags. Also provides a stitching and repair service and a warm welcome at her shop on Main Street.



Contact: **Mary Fitzgerald**
T: 087 9423388
E: info@malaidinglebags.com
W: www.malaidinglebags.com

Lat: 52.141733; Lon: -10.268416



Well-made craft lasts forever,
growing in both economic and
emotional value to its owner.



Authentic craft which has a traceable history enriches our world with its beauty.



craft trails NORTH KERRY



- Kerry Craft Trails Makers
- Independent Makers



1 UNIQUE GOLDSMITH

11 High Street, Tralee Town

Goldsmith and jewellery designer creating jewellery in platinum, gold or silver with precious and semi-precious stones. Restoration and repair of jewellery on site. Beautiful work and well worth a visit when you are out and about in Tralee.



Contact: **Anuschka Wolf**
T: 066 7118615
E: uniquegoldsmith@yahoo.ie
W: www.awgoldsmith.com

Lat: 52.269044; Lon: -9.710132

3 AOIFE HANNON HATS

1 Courthouse Road, Listowel Town

Design and tailoring, hats and headpieces - a joyful introduction to the world of hat-making. Aoife Hannon personally designs for weddings and race meetings. She also makes winter hats including the trilby and cloche hat. A fun demonstration into the art of hat design and making.



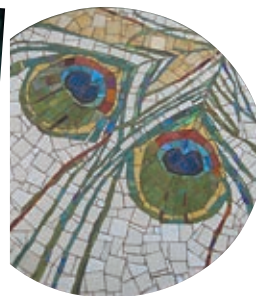
Contact: **Aoife Hannon**
T: 087 3209249
E: aoifehats@gmail.com
W: www.aoifehannon.ie

Lat: 52.447919; Lon: -9.482493

2 MARY J LEEN

Catherleaheen, Tralee

Mary J Leen is a contemporary stained glass artist. Mary uses traditional methods and techniques in her work and is inspired by Celtic mysticism and spirituality. Mary's work challenges our stereotypical perceptions of stained glass with her unique spiritual approach, her distinctive style and expert technical ability. She can meet any of your stained glass requirements and welcomes enquiries and visitors to the studio. Not to be missed.



Contact: **Mary J Leen**
T: 086 1668667
E: artistmaryleen@gmail.com
W: www.maryjleenart.com

Lat: 52.24144; Lon: -9.670801

4 OLIVE STACK GALLERY

4 Main Street, Listowel Town

Art gallery featuring paintings, prints and mosaics by artist Olive Stack, a native of Listowel and much loved not only for her streetscapes and portraiture but also for her landscapes. Gift line in jewellery and felt brooch's crafted in Listowel. Well known also for her beautiful custom picture framing. Well worth a visit.



Contact: **Olive Stack**
T: 068 23843
E: olive@olivestack.com
W: www.olivestack.com

Lat: 52.445527; Lon: -9.486469

5 DESIGN SPACE AT CHIC BOUTIQUE

2 Church Street, Listowel Town

Drop in anytime to the Design Space at Chic Boutique - an intimate space that acts as both a showcase and a work space for emerging and established Irish designers. Throughout the year Mary organises 'meet the fashion designer' days where you can meet the designer and hear first-hand about the inspiration behind some of Ireland's most exclusive fashion designs.



Contact: **Mary O'Flaherty**
T: 068 21155
E: kerrydesignspace@eircom.net
W: www.chicboutique.ie

Lat: 52.446050; Lon: -9.485389

6 MONSON IRISH JEWELLERY

Ballinclemisig, Ballyheigue

Using various woods and metals, on offer here is a terrific introduction to hand assembled jewellery by David Monson. He has designed and created a new collection of celtic and contemporary jewellery ranges. One of Kerry's latest makers and exporters of finely crafted jewellery.



Contact: **David Monson**
T: 087 0977388
E: david@monsonjewellery.com
W: www.monsonirishjewellery.com


Lat: 52.397295; Lon: -9.777539

Passionate about hand-made work, Kerry's makers display skill, training and great creativity.



INDEPENDENT MAKERS

Listed here are a range of designer/makers who work by appointment only. While their locations are shown on the maps throughout this brochure, they do not open as a stop on Kerry Craft Trails. Equally open for business though, their work is much prized by collectors. Commissions welcome. Please call in advance to arrange an appointment.

 Locations of Independent Makers are represented with this icon on maps throughout this brochure.



INDEPENDENT MAKERS

ANTOINETTE O'MAHONY MILLINERY 1

Baltovin, Ardara

For the finest in classy, stylish, original and wow! headgear for all occasions with accessories to match. Antoinette will help you look the very best version of yourself!



Contact: **Antoinette O'Mahony**
T: 087 6629635
E: gerandanto@eircom.net
W: www.antoINETTEomahony.com

Lat: 52.36251; Lon: -9.743434



SEÁN SUGRUE 2

Killerisk, Tralee

Irish designed jewellery, crafted by hand in gold and silver. A craft master at the height of his skill using the purest of techniques to create very beautiful pieces. Sean's work can be commissioned for gifts and prizes. One to collect.



Contact: **Seán Sugrue**
T: 087 1448855
E: sean@seansugrue.com
W: www.seansugrue.com

Lat: 52.15428; Lon: -9.41020



3 JOHN & THERESA MURPHY

Clahane, Ballyard, Tralee

Beautifully carved once-off art pieces in wood and bronze. Figurative and decorative pieces for presentation pieces, gifts and trophies. John and Theresa provide great insights into the art of wood carving and turning. Excellent experience in conducting group workshops and demonstrations.



Contact: **John & Theresa Murphy**
T: 087 2162196
E: murphysculpt@ircm.com
W: www.irishwoodcarving.com

Lat: 52.241982; Lon: -9.707960

5 AMBRÍ BOARDS

Unit 3 Greenhill,
Monavalley Industrial Estate, Tralee.

Hand Crafted Irish Chopping and Serving Boards. All the trees used for Ambrí Boards have fallen naturally or have had to come down for safety reasons. They use Irish hardwoods mainly aged 60 to 120 years old. For each tree used in the making of Ambrí Boards a new tree is planted. Great gift for weddings and special occasions. Engraving service available for your personal message. They also supply beautiful hampers containing a selection of chopping boards with wine or other gifts.



Contact: **Tony O'Shea**
T: 087 9817488
E: info@ambrichoppingboards.com
W: www.ambrichoppingboards.com

Lat: 52.284047; Lon: -9.706612

4 ALISON WALSH

12 An Choill, Ballyard, Tralee

As an expert in bridal and occasion-wear jewellery, Alison Walsh creates beautiful pieces to commission using semi-precious stones, glass and resin beads. She designs and hand makes each piece which includes a range of necklaces, earrings and bracelets. One to commission for that special occasion.



Contact: **Alison Walsh**
T: 086 2336432
E: walshalison@yahoo.ie
W: www.alisonwalsh.com

Lat: 52.255731; Lon: -10.017206

6 COLLEEN BOWLER

Main Street, Castlegregory

Colleen makes thrown utilitarian pottery whereby each piece bears a drawing that is unique and particular to that pot. One to watch and one to collect or commission, Colleen's design capability and technique is a rare find.



Contact: **Colleen Bowler**
T: 086 2650569 / 066 7139382
E: dasbowler@yahoo.com
W: www.colleenbowler.com

Lat: 52.255431; Lon: -10.023629

7 BRIDGET FLEMMING FINE ART

Kilshannig, The Maharees,
Castlegregory

Prints, canvasses and cards, inspired by the landscape and people of County Kerry. Bridget's keenly priced card range, available at Ballyseedy Home & Garden, Tralee is beautifully hand-made. One to buy regularly and one to commission for photographic work.



Contact: **Bridget Fleming**
T: 086 0287400 / 066 7139887
E: bridget@bridgetflemming.com
W: www.bridgetflemming.com

Lat: 52.1549783; Lon: -10.031204

9 SWINKY DOO DESIGNS

The Cottage, Rathea, Listowel

Colourful Textile Art and Accessories. Gorgeous personalised gifts & keepsakes for new babies, christenings, weddings and special occasions. Each commissioned piece is sewn using a combination of beautiful fabrics, buttons, ribbons and lace - transformed into pretty bunting, pictures, greetings cards, guardian angels and other lovely things!



Contact: **Karen Pleass**
T: 087 7626424
E: karen@swinkydoo.com
W: www.swinkydoo.com

Lat: 52.3852393; Lon: -9.4894409

8 LINDA NÍ HAINIFÉIN

Ballyferriert West, Dingle

Sculptural pieces including ceramic night lights using local and stoneware clay, sand and stones. As a ceramic artist Linda takes her inspiration from local history, archaeology and the environment of the Dingle Peninsula.



Contact: **Linda Ni hAiniféin**
T: 087 2980246
E: info@dingleceramics.com
W: www.dingleceramics.com

Lat: 52.1656396; Lon: -10.404984

DONNCHADHA O'CONNOR

Kilbaha, Moyvane, Listowel

Donnchadha O'Connor is a wood-turner, who creates uniquely beautiful, hand-turned pens in a variety of styles and from a selection of locally sourced sustainably managed native timbers. Timbers used include Bog Oak, Yew, Hawthorn and Blackthorn.



Contact: **Eileen O'Connor**
T: 087 395 7852
E: donnchadha@gmail.com
W: www.donnchadhaconcor.com

Lat: 52.480600; Lon: -9.330090

11 IVERAGH PANORAMICS

Knockeens, Cahersiveen

Landscape inspired range of art and craft products which includes shell jewellery, beach comb crafts, tea-towels, postcards, panoramic photographs, prints & canvasses. Barbara's creative techniques are applied across a number of mediums. Commission directly or buy from my retail outlet at Gallery One on Church Street, Cahersiveen.



Contact: **Barbara Hodges**
T: 087 7431778
E: barbarahodges@eircom.net
W: www.iveraghpanoramics.com

Lat: 52.397295; Lon: -9.777539

FAIRYLAWN ALPACA 13

Lisivygeen House, Cork Road, Killarney

Luxury Irish hand-knitted toys and baby accessories made with natural baby alpaca yarns. FairyLawn Alpaca was established in 2012 by Isobel Barrett. After returning to knitting after many years absence, Isobel identified a niche in the growing trend of Alpaca Farming, developing in Ireland. Alpaca fibre is lightweight, hypoallergenic and three times warmer than sheep wool. FairyLawn Alpaca aims to blend traditional knitting techniques with modern, luxury yarns.



Contact: **Isobel Barrett**
T: 086 2340011
E: fairylawn1@gmail.com
W: www.fairylawnalpaca.eu

Lat: 52.055318; Lon: -9.461132

12 IVERAGH STONE PRODUCTS

Strandsend, Cahirciveen

David works with slate to provide us with a range of clocks, barometers, keyholders, sundials, keyrings, calendars, headstones, plaques, coasters, mirrors and trophies. A very versatile maker who offers new designs and product choice each year. The transatlantic telegraph cable (Valentia - New Foundland, 1866) mounted on Valentia Slate in three different forms is marketed as a collector's item.



Contact: **David Howard**
T: 087 2385399 / 066 9472740
E: iveraghstone@eircom.net

Lat: 51.9601; Lon: -10.1829

MOUNTAIN ASH STUDIO 14

Glencuttane Lower, Kilgobnet, Beaufort

Original designs individually burned into native Sycamore. Inspirational and commemorative plaques, nature scenes, jewellery boxes, house signs and more. All pieces can be personalised.



Contact: **Amanda Saunders**
T: 066 9762654 / 087 1402306
E: amanda-saunders@hotmail.com
W: www.mountainashstudio.com

Lat: 52.05493; Lon: -9.78677

original Gifts and Commissions



Original Kerry will assist corporate bodies, public agencies and private businesses to commission a unique piece of craft as prizes, trophies or presentation gifts. Please make contact with us to discuss your needs and we will link you to one of our makers.



Become a Member BÍ I DO BHALL

Original Kerry calls for membership at the start of each year. A membership fee applies. Membership is approved based on the following criteria:

- That you are a professional designer/maker of your own work
- That your trading address is in County Kerry
- That your work is handmade, originates from Kerry and is produced in Ireland
- That you are the original designer of all your work and can prove designs as your own
- That you have registered your trading name with the Companies Registration Office (CRO)
- That you are a registered, sole trader, partnership or a limited company
- That you have a current Tax Clearance Certificate

Project Co-ordination: Deirdre Johnston

Tel: **+353 (0)86 852 4222**

Email: enquiries@originalkerry.com

Join Our Mailing List

Please join our mailing list and keep up to date on Original Kerry events and activities by emailing enquiries@originalkerry.com

Discount Voucher

Show this voucher at a Kerry Craft Trails location highlighted in this brochure to receive a special discount.

One voucher per customer, one voucher per transaction. Discounts are provided at the discretion of the craft maker on presentation of this voucher.



Original Kerry is supported by...

'Ó Chiarraí Ó Dhúchas'- le tacaíocht ó...



Visit the Original Kerry Website here...

